

TELEIOS GRANDE H12

The World Best Selling 3.2m Printer, TELEIOS



SPC

Stylish Penetration Control

SPC is designed to enable homogeneous color penetration into fabrics in direct-to-textile printing by utilizing several complementary elements.



PENETRATION WITHOUT SPC

PENETRATION WITH SPC



Be Colorful





Be Clear



SAMPLE A
Penetration without SPC



SAMPLE B
Penetration **with SPC**



SAMPLE A
Penetration without SPC



SAMPLE B
Penetration **with SPC**

Colorability



X2 Wider

Max Printing Width



TELEIOS GRANDE H12

The World Best Selling 3.2m Printer, TELEIOS



INDUSTRIAL LEVEL SIGN & GRAPHICS PRINTER

Up to

132 m²/h

Speed

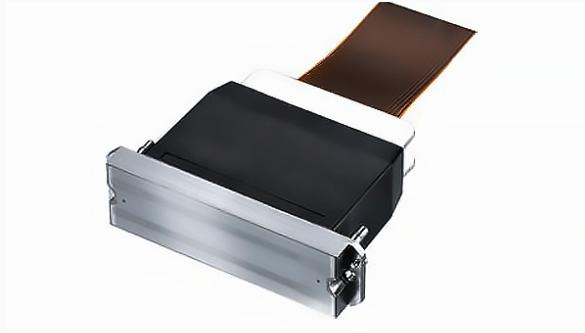
Up to

400
X 2,400 dpi

Resolution

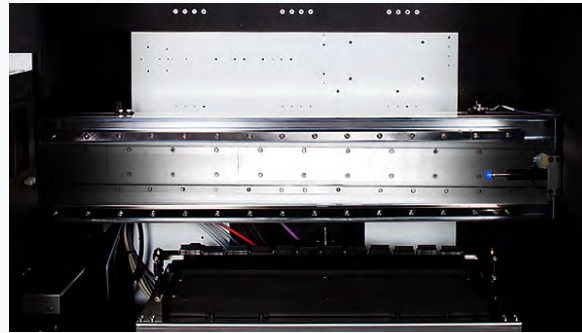


KEY FEATURES



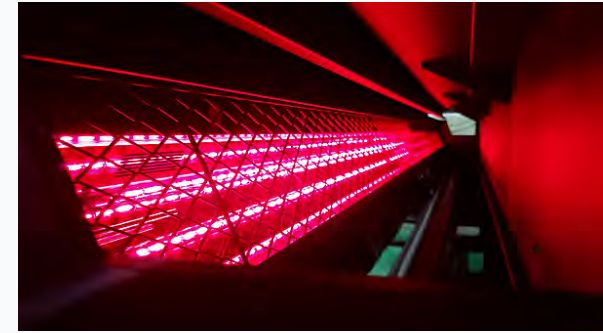
RICOH GEN 5

The Ricoh Gen5 is the most suitable head for signage and graphics, as it reduces ink usage and improves productivity with its high-performance.



LINEAR MOTOR AND METAL ENCODER SCALE

The linear motor and metal encoder scale ensure highly precise printing, while also maintaining low operational and maintenance costs.



POWERFUL FRONT DRYER

The halogen-based drying system is more effective than others in improving printing quality in large-scale production.



ADVANCED TENSION CONTROL

The advanced tension control system allows for more precise control of the media feeding process for a variety of fabrics.



DUST REMOVAL IN MAIN BODY

The suction fan is equipped for the entire printer to optimize maintenance of the recommended head temperature and minimize the occurrence of ink mist.



HIGH-CAPACITY INK TANKS

The high-capacity ink tanks system, which is very simple and accessible, is designed for ink refilling, even during printing, to enable mass printing.

SPECIFICATIONS

Printing

Print Head

Ricoh, 12 Heads

Ink Type

Disperse

Number of Colour

6 or 5+SPC

Max Printing Resolution

400 X 2,400dpi

Max Printing Width

3,200mm

Printing Mode

Bi-Direction/Uni-Direction

Ink

Disperse

Yellow, Magenta, Cyan, Black
+ Lc, Lm, Or, Tur, Bl

Ink Capacity

5L

Printing Speed

400 X 1,200dpi 2pass

132m²/h

400 X 2,400dpi 4pass

75m²/h

SPECIFICATIONS

Media

Media Drive

Roll to Roll

Max Media Width

3,250mm

Max Media Load

Diameter : 320mm, Weight : 150kg

Core Diameter Feeder

320mm, 3inch

Operational Environment

Temperature

Operating: 20°C~25°C

Humidity

Operating: 40~65%

* Environmental influences can affect print quality.

Others

Rip Software

Ergosoft, Caldera, Wasatch, Onyx

SPECIFICATIONS

Dimensions

Printing Machine

5460(W) x 1360(D) x 1740(H) mm

Heatman Grande

4330(W) x 960(D) x 1350(H) mm

TU-4000

3840(W) x 500(D) x 620(H) mm

Weight

Printing Machine

2000 kg

Heatman Grande

1340 kg

TU-4000

280 kg

Electricity

Printing Machine

3Ø AC 380V 20.9 A (13.72 kW)

Heatman Grande

30.96kW, 3Ø AC 380~415V, 47.04A

TU-4000

1kW, 1Ø AC 220~240V, 4.5A

OUR GLOBAL NETWORK

DGI has been expanding its presence to approximately 80 countries. As of last year, the service was being operated in various countries, including Italy, the UK, Saudi Arabia, and the US. Now, more than 3,600 companies are estimated to have been using it.

DGI HEADQUARTERS

52, Cheongdam-Ro, Yangju-si, Gyeonggi-do, Korea
TEL +82-31-820-8900

DGI GLOBAL SALES OFFICE

11F, Simon Tower, 15 Teheran-ro 84-gil, Gangnam-gu, Seoul
TEL +82-31-820-8900

DGI EUROPE

Via Giuseppe Garibaldi, 151, 20833 Giussano MB, Italy
TEL +39-340-3870459

DGI USA

27 Spectrum Pointe Drive, Suites 311 and 312, Lake Forest, CA, USA
TEL +1-949-942-1885

DGI CHINA

Outlets130-104,Hengdayulanguoji,No.702 Shanhe Road, Chengyang District,
Qingdao City, Shandong Province, CHINA
TEL +86-187-6390-1188

TELEIOS GRANDE H12

The World Best Selling 3.2m Printer, TELEIOS

